

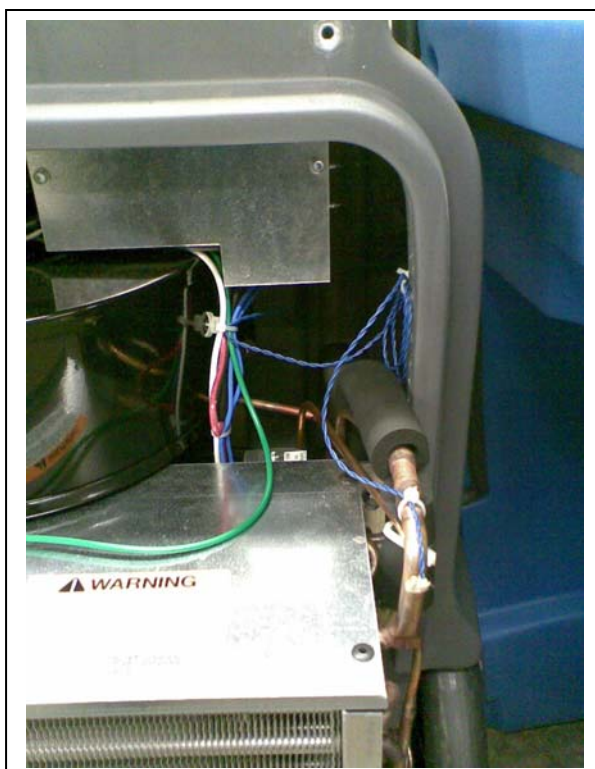
## DrizAir 1200 defrost sensor wire change guide

**Ensure dehumidifier is switched off and plug removed from socket**

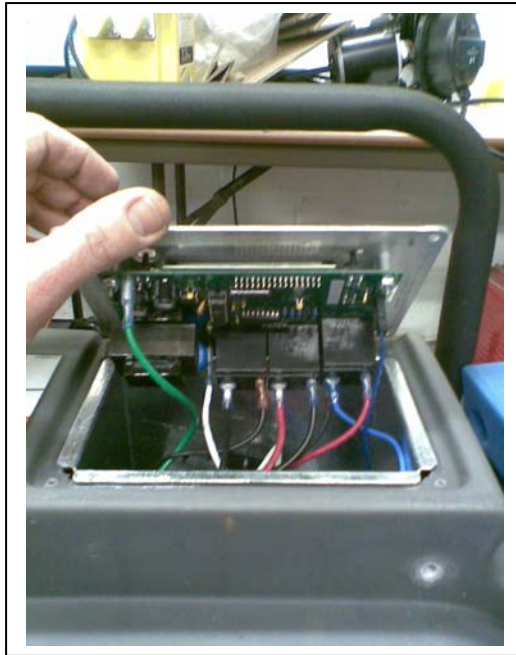
- 1 – Unplug machine from power before carrying out this work
- 2- Remove front cover of machine – 6 bolts – 2 at the top, 4 at the bottom



- 3 – Defrost sensor wire is thin blue wire on the right of the coil – remove the cable ties and pull the sensor out of the small pocket on the coil – see below



4 – Undo the 4 screws on the control panel and lift up panel as shown



5 – Squeeze the plug on the other end of the defrost sensor wire and pull plug off control panel.



6 – Fit new defrost sensor wire to control panel and feed wire through to coil.

7 - Put some thermal paste in the coil pocket and put the sensor wire in.

8 – Reattach wires using cable ties

9 - Reassemble machine – control panel and front cover