

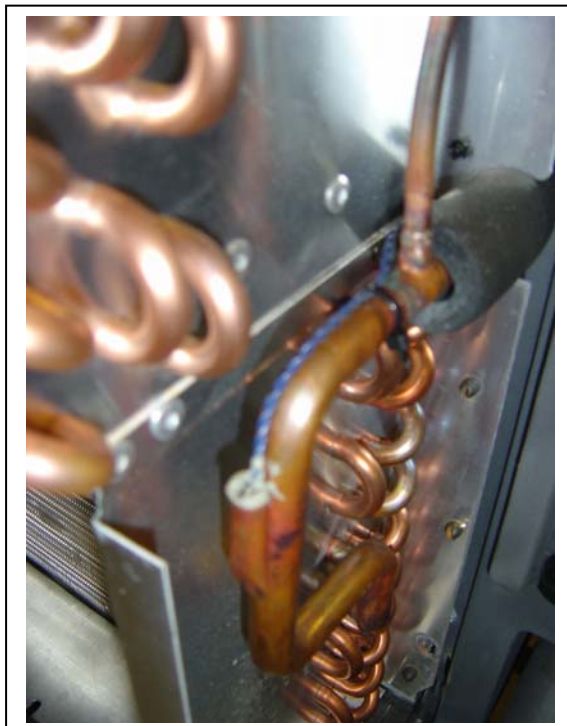
EV1800 defrost sensor change guide

Ensure dehumidifier is switched off and plug removed from socket

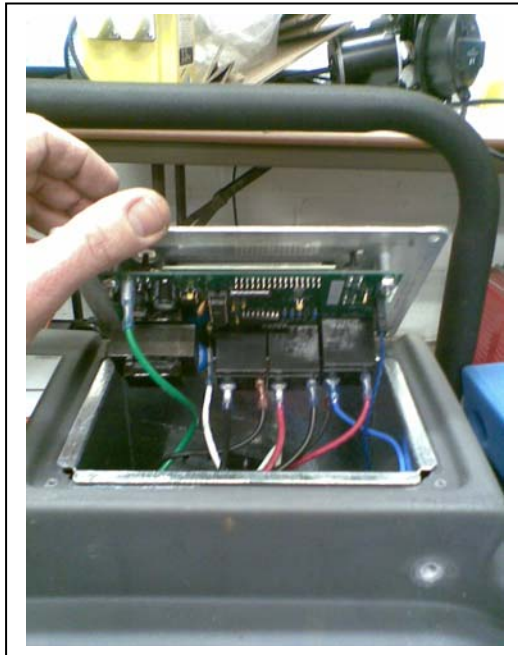
- 1 – Unplug machine from power before carrying out this work
- 2- Remove front cover of machine – 6 bolts – 2 at the top, 4 at the bottom



- 3 – Defrost sensor wire is thin blue wire on the right of the coil – remove the cable ties and pull the sensor out of the small pocket on the coil – see below



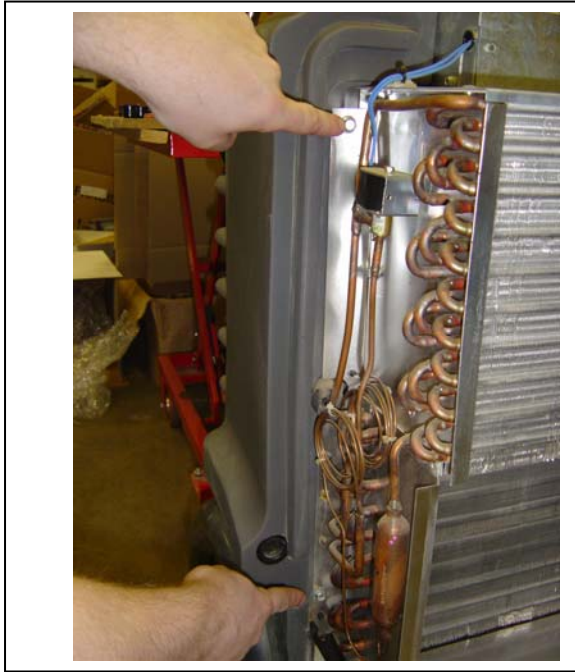
4 – Undo the 4 screws on the control panel and lift up panel as shown



5 – Squeeze the plug on the other end of the defrost sensor wire and pull plug off control panel.



- 6 – Lay machine on back, undo 5 bolts on bottom, holding back case to chassis.
Stand machine upright and undo 4 bolts holding coil to back panel – 2 on each side – see below (bolts pointed at)



- 7 – Pull the back case back from top of coil – it will only move back about 6” but this is enough to get to the defrost sensor wire – see below



- 8 – Cut tie wraps and pull out old defrost wire
- 9 - Fit new defrost sensor wire to control panel and feed wire through to coil.
- 10 - Put some thermal paste in the coil pocket and put the sensor wire in.
- 11– Reattach wires using cable ties
- 12 - Reassemble machine – control panel , Back cover & front cover

Allow machine to stand for 1 hour before starting up to let the refrigerant oil inside the machine drain back down

Any queries please call Dri-eaz on 01908 611211